

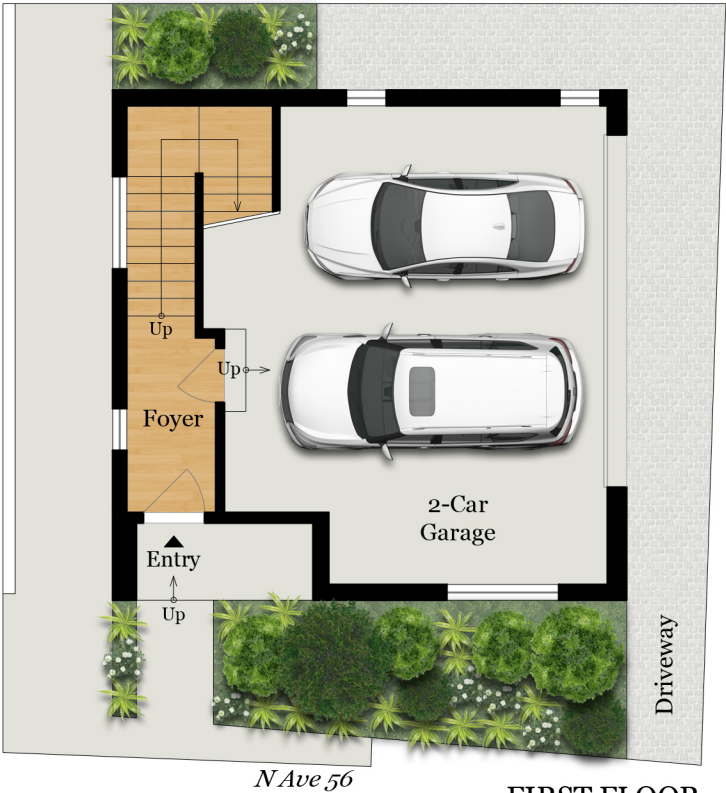
Total Finished  
Square Footage: 1,931 SQ FT

Above-Grade: 1,931 SQ FT   Below-Grade: N/A  
Plus 449 SQ FT 2-Car Garage on Main Level  
*Calculated per ANSI Standard Z765-2003.*

\* Total Finished & Unfinished Square Footage: 2,380 SQ FT

1128 N AVENUE 56

LOS ANGELES, CA 90042



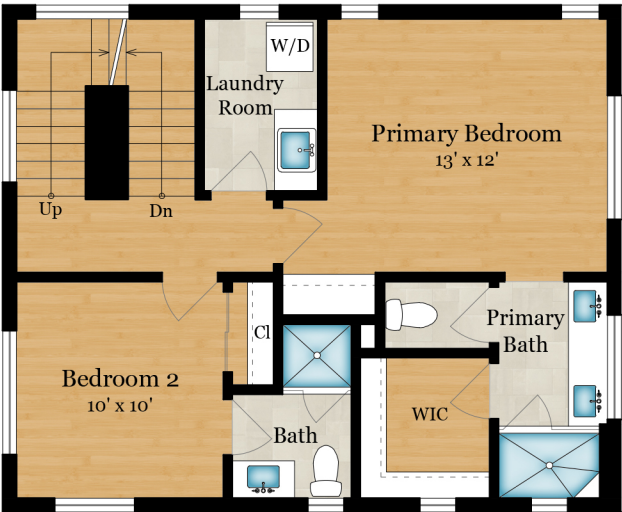
FIRST FLOOR

113 SQ FT - Finished  
449 SQ FT - Unfinished  
Ceiling Height: 9'-0"



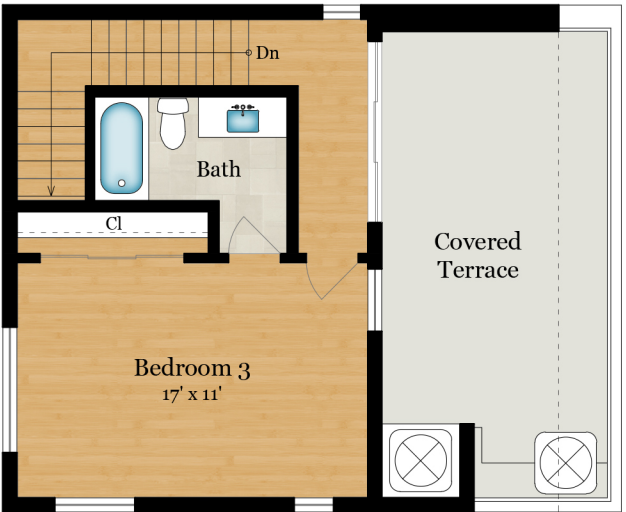
SECOND FLOOR

666 SQ FT  
Ceiling Height: 9'-0"



THIRD FLOOR

714 SQ FT  
Ceiling Height: 9'-0"



FOURTH FLOOR

438 SQ FT  
Ceiling Height: 9'-0"



Rendering by Arcdimension  
All measurements are approximate. While deemed reliable, no information on these floor plans should be relied upon without independent verification.