



# Total Finished Square Footage: 4,672 SQ FT

Above-Grade: 4,672 SQ FT Below-Grade: N/A

- Main Residence: 3,911 SQ FT
- Pool House: 761 SQ FT

Plus 480 SQ FT 2-Car Garage

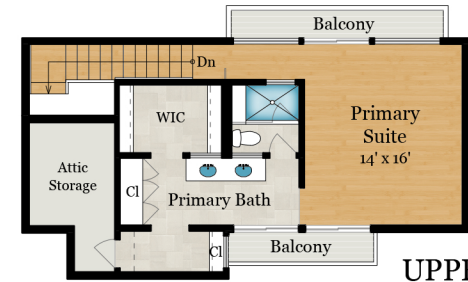
Plus 92 SQ FT Attic Storage on Upper Level

Calculated per ANSI Standard Z765-2003.

\* Total Finished & Unfinished Square Footage: 5,244 SQ FT

## 1100 HERMOSA ROAD

PASADENA, CA 91105



**UPPER LEVEL**  
592 SQ FT



**MAIN LEVEL**  
2,968 SQ FT

Rendering by Arcdimension

All measurements are approximate. While deemed reliable, no information on these floor plans should be relied upon without independent verification.